

EN-US

LRH 200

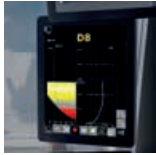
LRH 3002.07
www.liebherr.com

LIEBHERR

Piling and drilling rigs



Concept and characteristics



PDE[®]
Process Data Recording



Ground
Pressure
Visualization



MyJobsite



Radio remote
control



LIPOS[®]
Positioning System



LiDAT[®]
Data Transmission



The robust universal machine for a wide variety of applications

- Hydraulic hammer
- Pre-drill
- Continuous flight auger drilling
- Full displacement drilling
- Soil mixing
- Down-the-hole drilling

Assistance systems

- Cruise Control for all main functions
- Joystick control for all machine functions
- Ground Pressure Visualization
- Radio remote control
- Leader inclination memory
- Positioning system
- Drilling assistant
- Free-fall winches with slack rope monitoring and prevention

Technical description



Diesel engine

Power rating according to ISO 9249	250 kW (335 hp) at 1700 rpm
Engine type	Liebherr D 936 A7-04
Fuel tank capacity	185 gal with continuous level indicator and reserve warning
Exhaust certification	EU 2016/1628 Stage V; EPA/CARB Tier 4f ECE-R.96 Power Band H non-certified emission standard



Hydraulic system

Pump for working tools	2x 72 gal/min
Separate pump for kinematics	34 gal/min
Hydraulic oil tank capacity	159 gal
Max. working pressure	5,076 PSI
Hydraulic oil	electronic monitoring of all filters use of synthetic environmentally friendly oil possible



Crawlers

Drive system	with fixed axial piston hydraulic motors
Crawler side frames	maintenance-free, with hydraulic chain tensioning device
Brake	hydraulically released, spring-loaded multi-disc holding brake
Drive speed	0-0.83 mph
Track force	149,498 lbf
Grousers	width 35.4 inch (option 27.6 and 31.5 mm)



Swing gear

Drive system	with fixed axial piston hydraulic motors, planetary gearbox, pinion
Swing ring	triple-row roller bearing with external teeth
Brake	hydraulically released, spring-loaded multi-disc holding brake
Swing speed	0-3.75 rpm continuously variable



Hammer winch with free fall

Line pull (effective)	44,962 lbf
Line pull in pile driving operation	40,466 lbf
Rope diameter	24 mm
Rope speed	0-185 ft/min

The winch is outstanding in its compact design and easy assembly. Clutch and braking functions on the free-fall system are provided by a compact designed, low wear and maintenance-free multi-disc service brake.



Pile winch with free fall

Line pull (effective)	44,962 lbf
Line pull in pile driving operation	35,969 lbf
Rope diameter	24 mm
Rope speed	0-184 ft/min

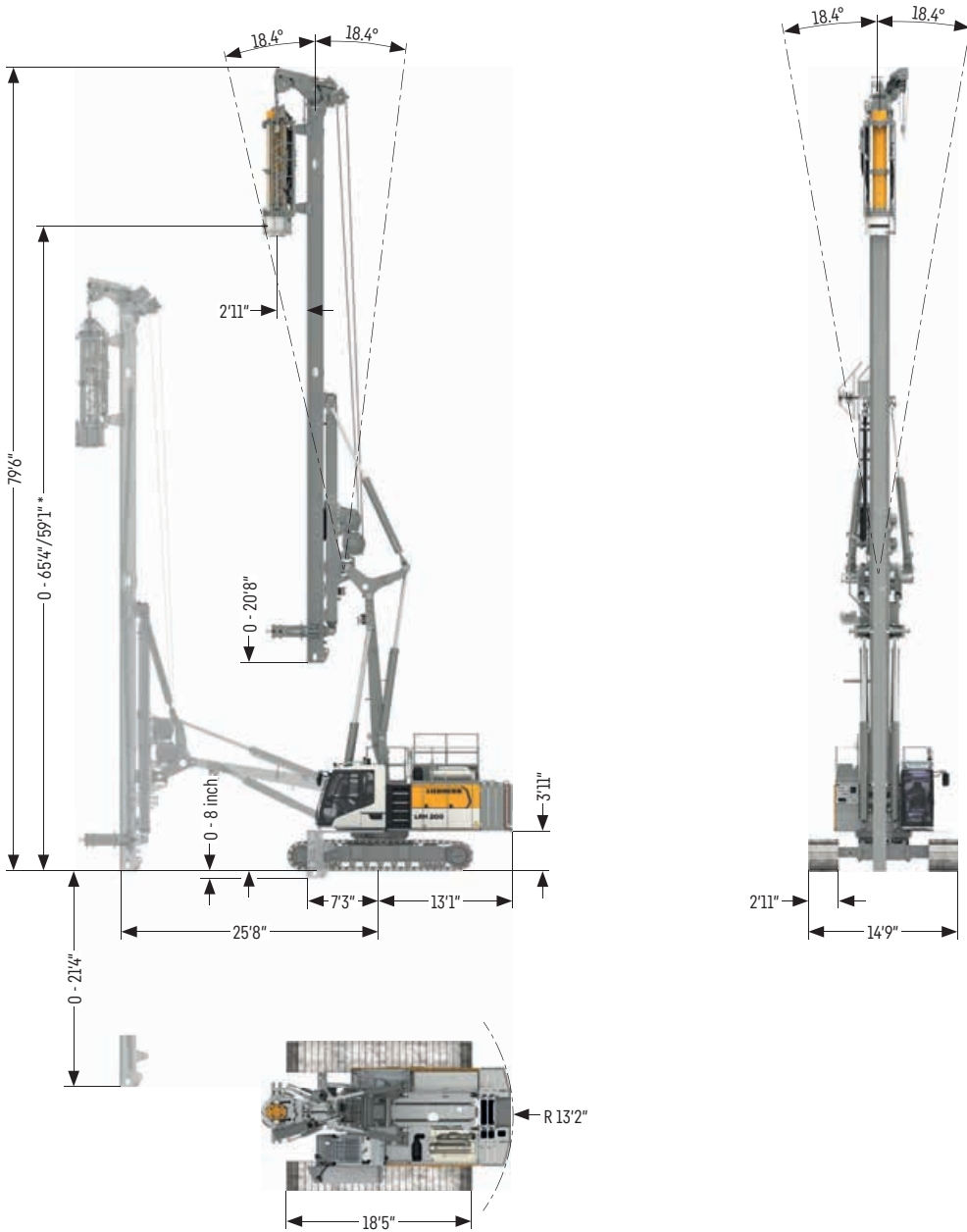
The winch is outstanding in its compact design and easy assembly. Clutch and braking functions on the free-fall system are provided by a compact designed, low wear and maintenance-free multi-disc service brake.

Remarks:

- Illustrations showing the types of application (e.g. full displacement drilling, continuous flight auger drilling etc.) are examples only.
- Weights and transport dimensions can vary with the final configuration of the machine. The figures in this brochure may include options which are not within the standard scope of supply of the machine.

Dimensions

Standard



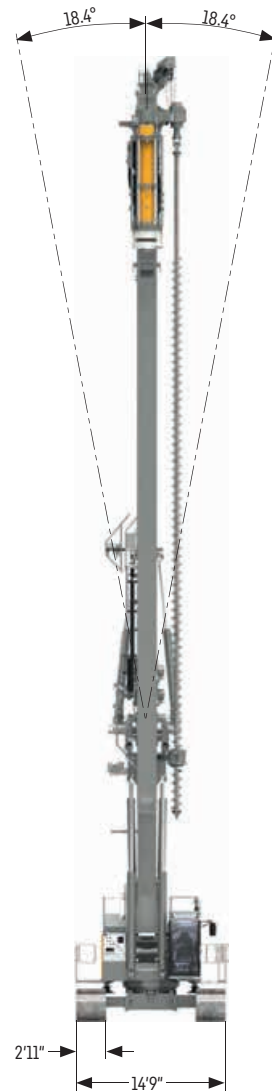
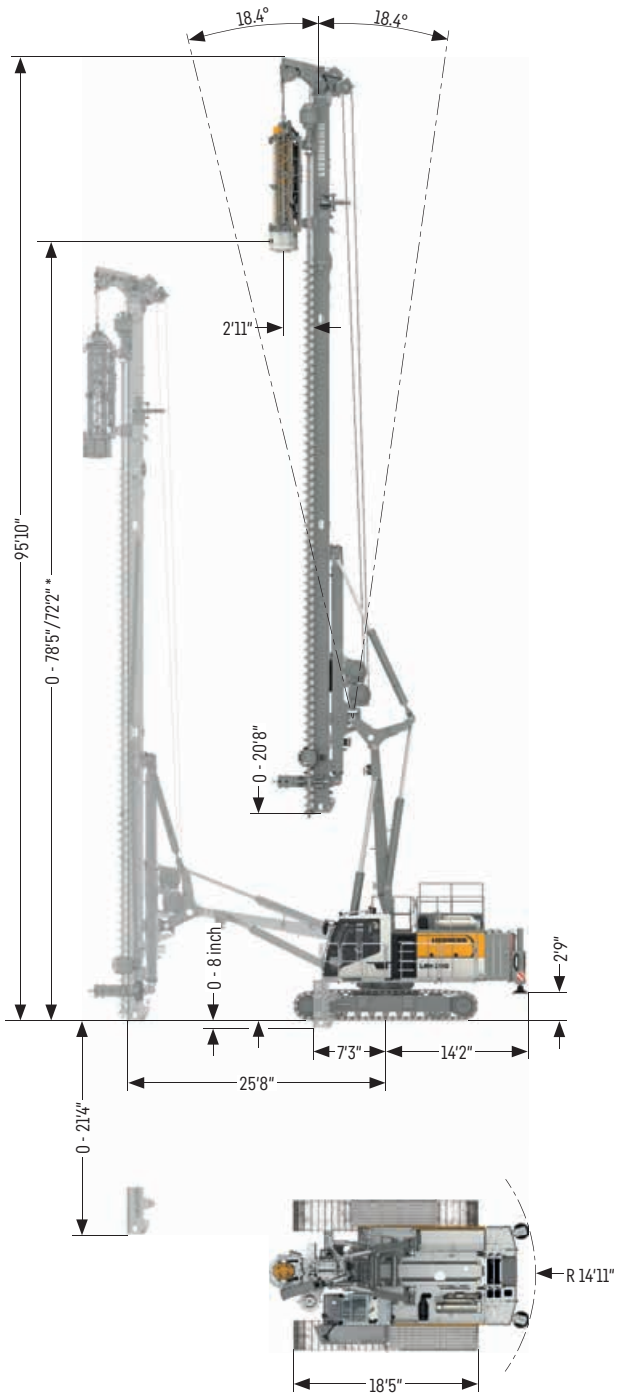
Operating weight

Total weight with hammer H 6-6	lbs 178,574
Total weight with hammer H 10-100	lbs 192,204

The operating weight includes the basic machine LRH 200 and 39,683 lbs counterweight.

* Hammer H 10-100

Folding leader



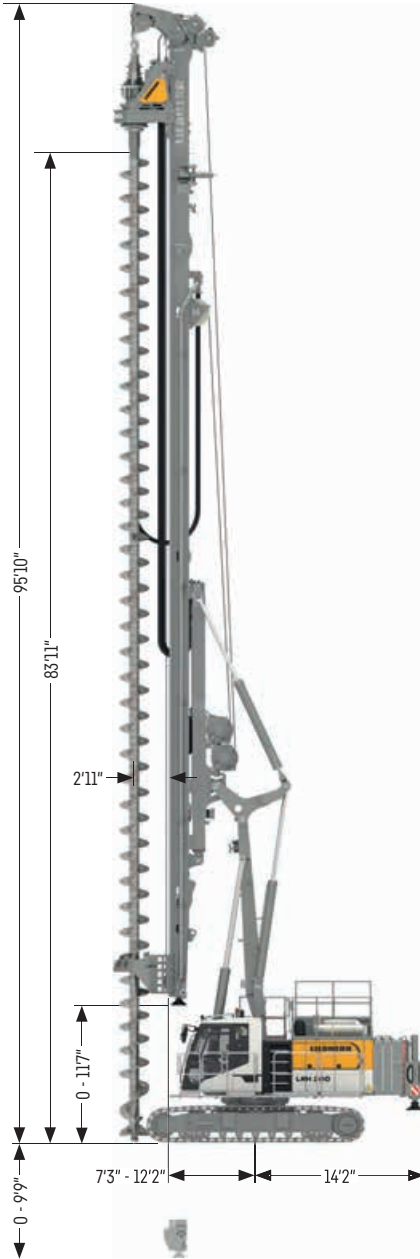
Operating weight

Total weight with hammer H 6-6	lbs 186,070
Total weight with hammer H 10-100	lbs 200,400

The operating weight includes the basic machine LRH 200, rotary BA 35 and 39,683 lbs counterweight.

* Hammer H 10-100

Drilling version

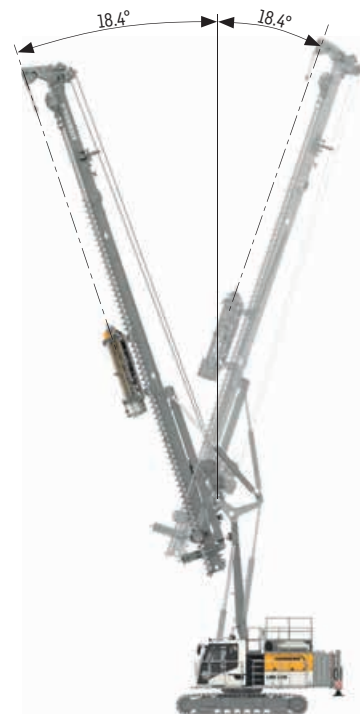


Operating weight

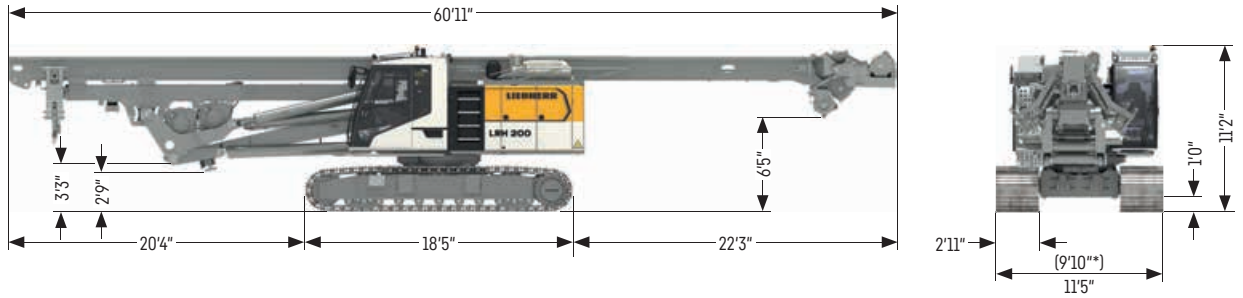
Total weight with 35.4 inch 3-web grousers lbs 199,298

The operating weight includes the basic machine LRH 200 incl. rotary BAT 250, auger, auger cleaner and 39,683 lbs counterweight.

Inclinations for pile driving operation



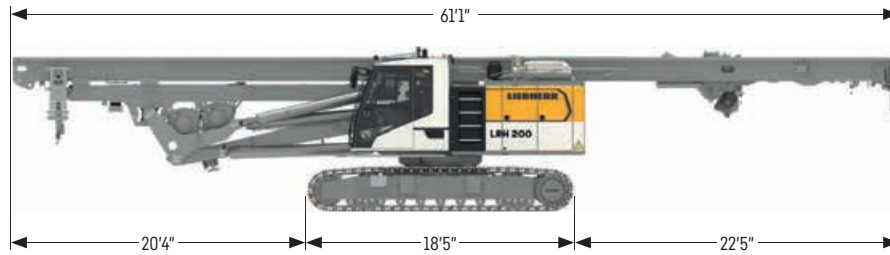
Transport dimensions and weights



Transport standard

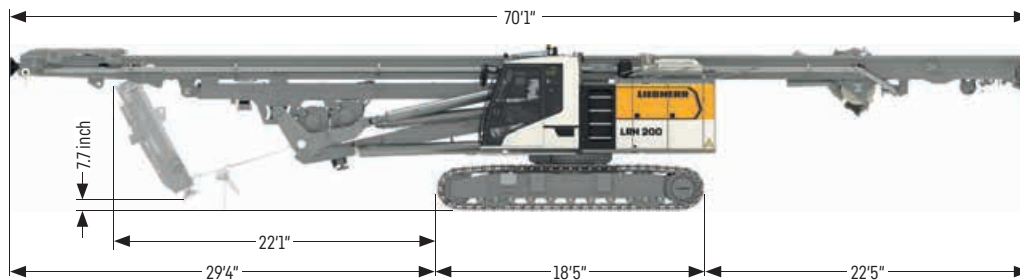
includes the basic machine (fully tanked and ready for operation) with leader, without counterweight lbs 117,506

* with 27.6 inch grousers, without all round platform and railings



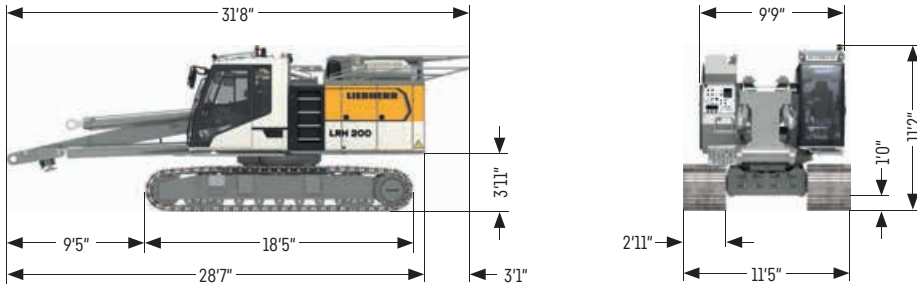
Transport folding leader

includes the basic machine (fully tanked and ready for operation) with leader, without counterweight lbs 119,711



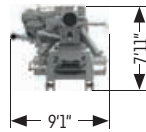
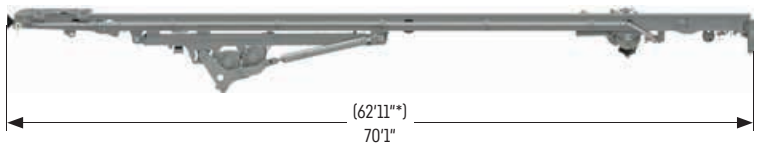
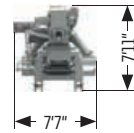
Transport drilling version

includes the basic machine (fully tanked and ready for operation) with leader, concrete supply line and multi-sledge, without counterweight lbs 125,663



Basic machine

with crawler side frames, without counterweight	lbs 78,705
---	------------



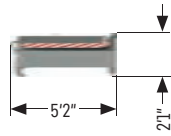
Leader

Weight standard leader	lbs 37,258
Weight folding leader	lbs 41,006
Weight drilling version	lbs 46,958

* leader lower part folded

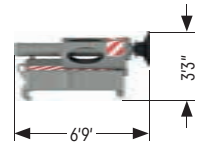
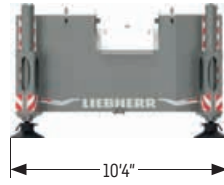
Options

Concrete supply line	lbs 1,323
All round platform with railings	lbs 882



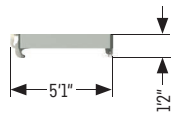
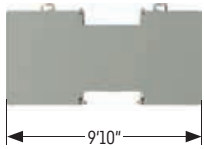
Counterweight

Weight lbs 17,637



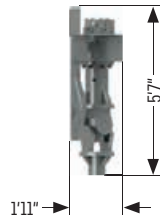
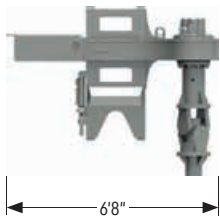
Counterweight with rear support unit

Weight lbs 17,637



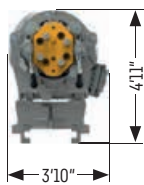
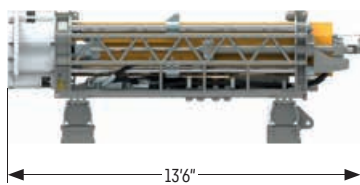
Intermediate slab

Weight lbs 11,023



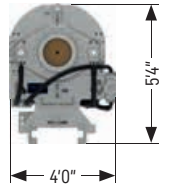
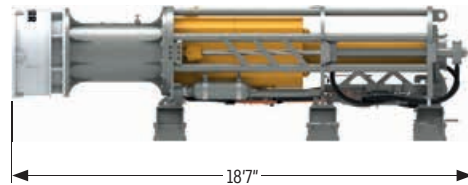
BA 35

Weight lbs 3,086



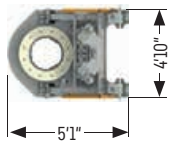
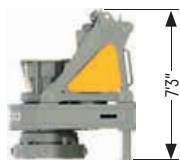
Hammer H 6-6

Weight incl. 13,228 lbs drop weight lbs 21,385



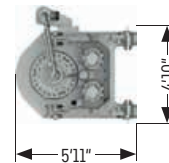
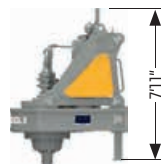
Hammer H 10-100

Weight incl. 22,046 lbs drop weight lbs 35,715



BAT 250

Weight lbs 14,330



MAT 100.1

Weight lbs 12,566

Hydraulic hammer H 6 and H 10



Performance data

Hammer type		H 6-3	H 6-4	H 6-5	H 6-6	H 10-75	H10-100
Drop weight	lbs	6,614	8,818	11,023	13,228	16,535	22,046
Max. rated energy	lbf-ft	26,552	35,403	44,254	53,104	66,381	88,507
Blow rate	blows/min	50-150	50-150	50-150	40-150	50-150	50-150
Max. pile length*	ft	80.0	80.0	80.0	80.0	73.8	73.8
Hammer weight incl. pile helmet and dolly	lbs	14,771	16,976	19,180	21,385	30,203	35,715

Various pile helmet sizes up to diameters of 2.1 ft for the hammer H 6, up to up to 2.6 ft for the hammer H 10 and in square design available as standard. Other pile helmet sizes available on request

* For the version without leader upper part the max. pile length is reduced by 16.4 ft.

Pre-drill BA 35



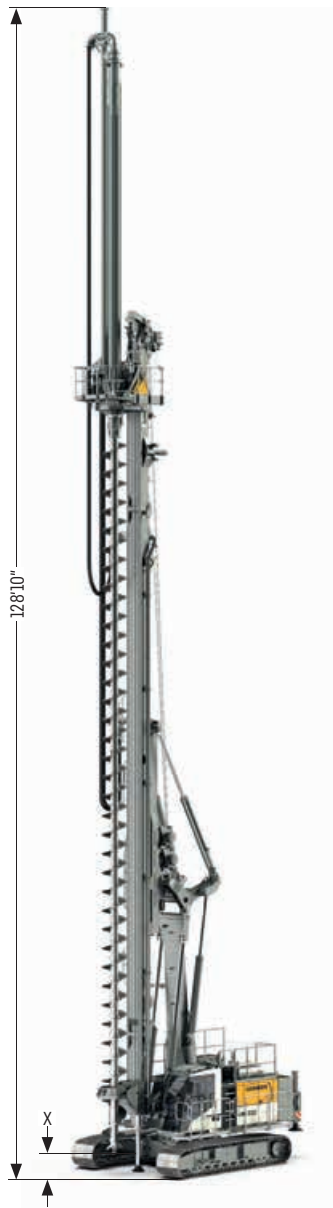
Performance data

Rotary drive - torque	lbf-ft	0 - 25,815
Rotary drive - speed	rpm	0 - 20
Max. drilling diameter	ft	0 - 1.2
Max. pile length* H 6/H 10	ft	76.9/70.6
Max. drilling depth* H6/ H10	ft	57.1/50.6
Additional crowd force		hammer weight

Other drilling diameters available on request

* For the version without leader upper part the max. drilling depth and max. pile length are reduced by 16.4 ft.

Continuous flight auger drilling



Performance data

Rotary drive - torque	lbf-ft	169,639
Rotary drive - speed	rpm	58
Max. drilling diameter*	ft	3.3
Drilling depth without Kelly extension**	ft	80.4
Drilling depth with 32.8 ft Kelly extension**	ft	113.2
Max. pull force	lbf	89,923
Max. crowd force	lbf	44,962

Above drilling depths take into account that an auger cleaner is used and the cardan joint has been removed.

Above drilling depths are valid for the use of standard tools and for an X value of 1.3 ft (see above illustration).

* Other drilling diameters available on request

** For the version without leader upper part the drilling depth is reduced by 16.4 ft.

Full displacement drilling



Performance data

Rotary drive - torque	lbf-ft	169,639
Rotary drive - speed	rpm	58
Max. drilling diameter*	ft	1.6
Drilling depth without Kelly extension**	ft	82.7
Drilling depth with 32.8 ft Kelly extension**	ft	115.5
Max. pull force	lbf	89,923
Max. crowd force	lbf	44,962

Above drilling depths are valid for the use of standard tools and for an X value of 0.6 ft (see above illustration).

* Other drilling diameters available on request

** For the version without leader upper part the drilling depth is reduced by 16.4 ft.

Soil mixing



Performance data BAT 250

Rotary drive - torque	lbf-ft	169,639
Rotary drive - speed	rpm	58
Max. mixing diameter*	ft	4.9
Mixing depth**	ft	79.7
Mixing depth with 32.8 ft Kelly extension**	ft	112.3
Max. pull force	lbf	89,923
Max. crowd force	lbf	44,962

Above mixing depths are valid for the use of standard tools and for an X value of 3.7 ft for MAT 100.1, and 1.9 ft for BAT 250 (see above illustration).

* Other mixing diameters available on request

** For the version without leader upper part the mixing depth is reduced by 16.4 ft.



Performance data MAT 100.1

Rotary drive - torque	lbf-ft	70,068
Rotary drive - speed	rpm	100
Max. mixing diameter*	ft	3.3
Mixing depth**	ft	79.7
Max. pull force	lbf	89,923
Max. crowd force	lbf	44,962

Down-the-hole drilling



Performance data DHR 110

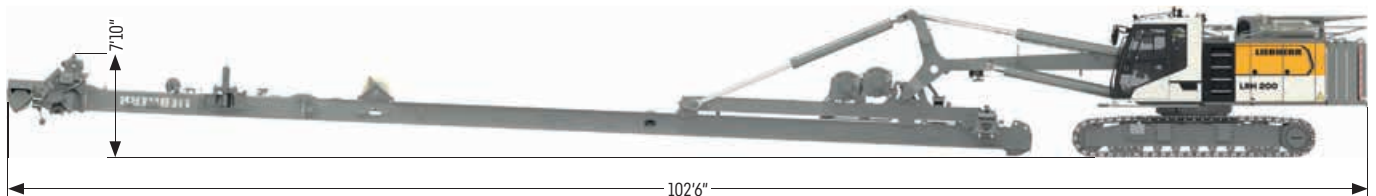
Rotary drive - torque	lbf-ft	78,182
Rotary drive - speed	rpm	41
Max. drilling depth	ft	82.7
Max. pull force	lbf	89,923
Max. crowd force	lbf	44,962
Leader inclination (forward/backwards/sideways)	°	5.7/18.4/9.5

Elevation mode



By supporting the leader on the ground and extending the rear support cylinders, the carrier machine is elevated. The undercarriage can thus be swivelled on the spot, which makes it easier to move the piling rig in restricted spaces.

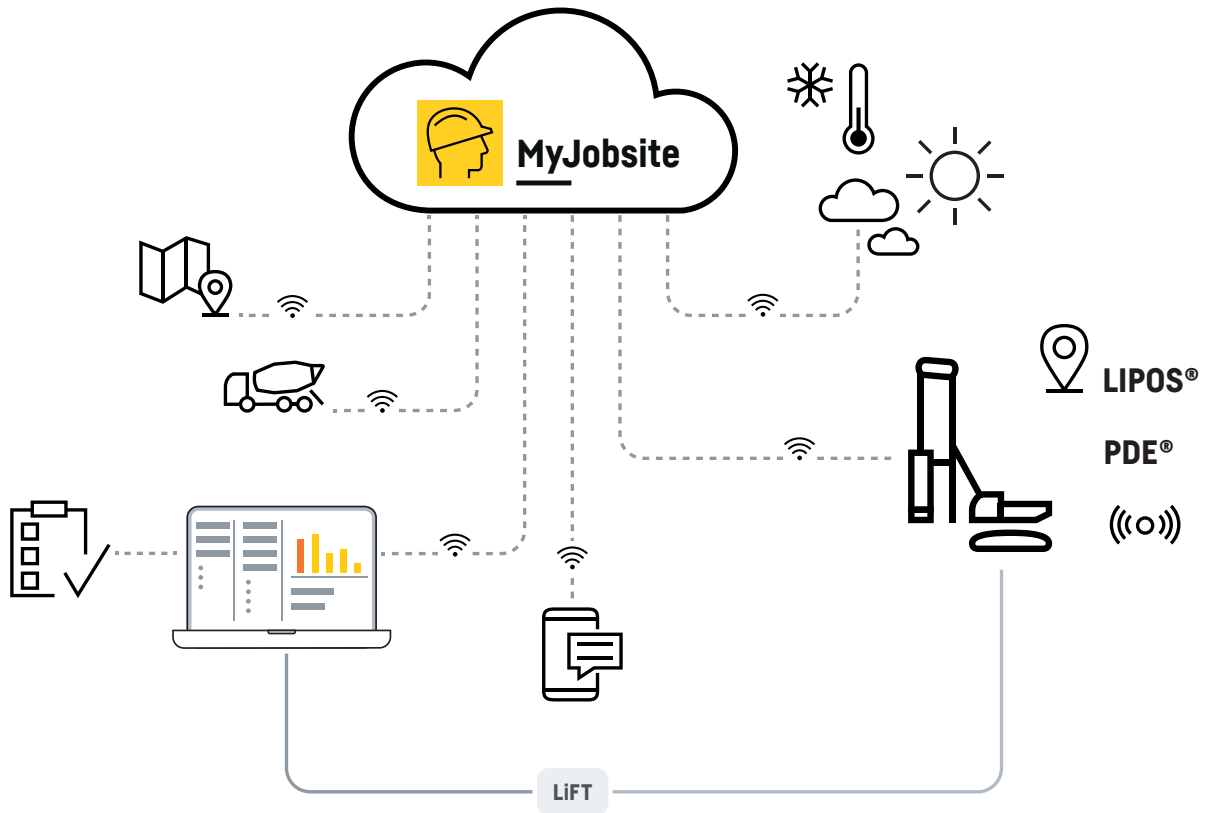
Service mode (without attachments)



For maintenance and service work on the leader and carrier machine, the leader can be folded forward. In this position the piling rig cannot move or travel.

Digitalization in deep foundation work

As deep foundation expert, Liebherr has created a combination of the most diverse assistance systems and software solutions in order to record and evaluate complex processes and to be able to provide the corresponding evidence.



LIPOS - Liebherr Positioning System

Using pre-installed components, LIPOS enables the direct integration of machine control systems from Trimble and Leica. These systems are based on modern DGNSS technology (Differential Global Navigation Satellite System) and so achieve the best possible conditions for a precise and efficient positioning of Liebherr machines and their attachment tools.

PDE

All working processes can be electronically recorded and visualized using the process data recording system PDE. The system is operated and displayed on the PDE touchscreen in the operator's cab. PDE records operating data from the Litronic control system, as well as data from external sensors.

MyJobsite

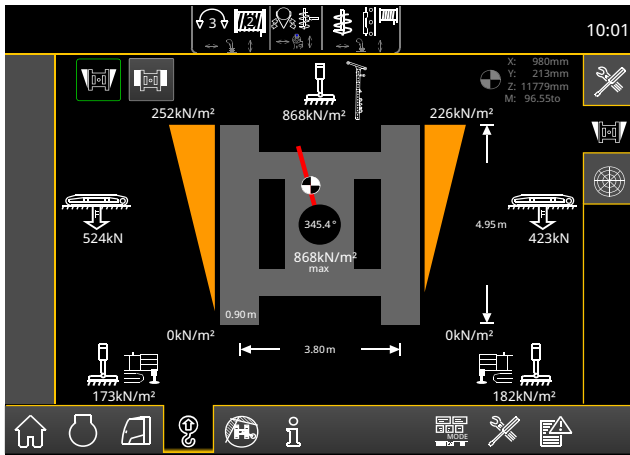
Using the MyJobsite software solution all relevant process, machine, construction site and positioning data (LIPOS) can be recorded, displayed, analysed, managed

and evaluated in one central location. The collected data can be accessed via a web browser when an internet connection is active.

With the recorded PDE data, such as the driving progress of the pile per blow, the total number of blows, or the impact frequency per minute, a driving protocol is automatically generated as proof of quality directly after completion of a work process. The parameters of the driving protocol can be defined and assigned in advance. Using the templates saves a lot of time when creating the protocols.

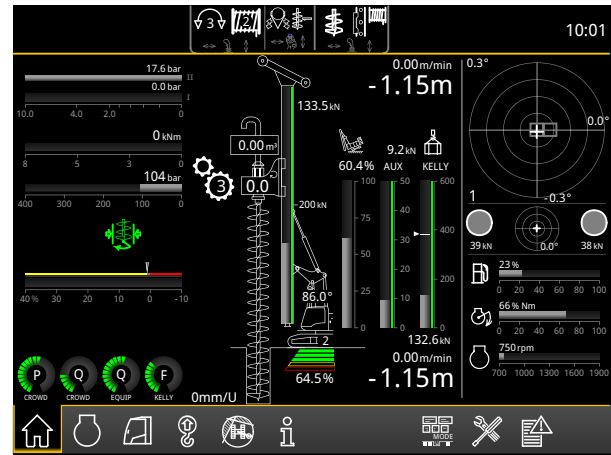
MyJobsite is THE tool for quality control and documentation. The deluge of data, which is accrued each day from a wide variety of sources on the jobsite, can be recorded precisely and processed in an informative manner. Unpopular bureaucratic work is kept to a minimum and the amount of time required for it is significantly reduced. At the same time, the quality of administration work is maximised.

Ground Pressure Visualization



Features:

- The actual ground pressure is calculated in real time
- The maximum admissible ground pressure can be individually predefined
- The utilization is continuously calculated and displayed on the monitor in the operator's cab
- Audible and visual warnings when the predefined values are approached



Your benefits:

- Increased safety on the jobsite due to consideration of prevailing ground conditions
- Higher operator comfort thanks to clearly displayed information and warning signals
- Prevention of critical or stressful situations before they occur
- User-friendly and intuitive handling in the operator's cab



Download datasheet



Please contact us.

Liebherr-Werk Nenzing GmbH · Dr. Hans Liebherr Str. 1 · 6710 Nenzing, Austria
Phone +43 50809 41-473 · foundation.equipment@liebherr.com · www.liebherr.com
facebook.com/LiebherrConstruction